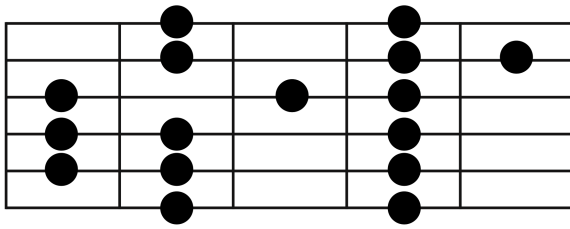


Die Durtonleiter in fünf Fingersätzen

Ohne Streckungen - enge Fingersatz-Lage

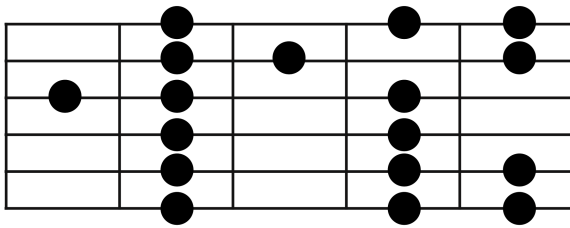
David Eggert

1. Pattern



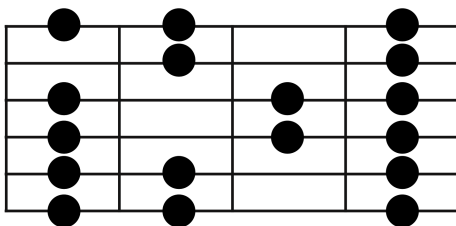
Musical notation for the first pattern of the C major scale. The treble clef is on a single staff. The key signature has one sharp (F#). The time signature is 4/4. The notation shows the scale ascending and then descending. The fingering is indicated by numbers 1-5 below the notes. The scale starts on C4 (middle C) and ends on G5.

2. Pattern



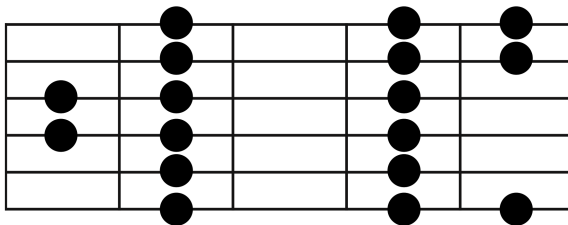
Musical notation for the second pattern of the C major scale. The treble clef is on a single staff. The key signature has one sharp (F#). The time signature is 4/4. The notation shows the scale ascending and then descending. The fingering is indicated by numbers 1-8 below the notes. The scale starts on C3 and ends on G7.

3. Pattern



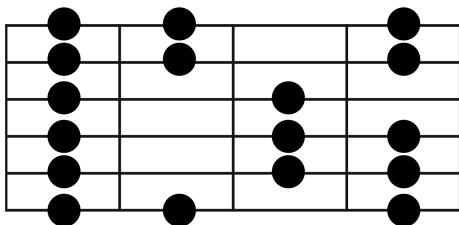
Musical notation for the third pattern of the C major scale. The treble clef is on a single staff. The key signature has one sharp (F#). The time signature is 4/4. The notation shows the scale ascending and then descending. The fingering is indicated by numbers 1-10 below the notes. The scale starts on C4 and ends on G8.

4. Pattern



Musical notation for the fourth pattern of the C major scale. The treble clef is on a single staff. The key signature has one sharp (F#). The time signature is 4/4. The notation shows the scale ascending and then descending. The fingering is indicated by numbers 1-13 below the notes. The scale starts on C5 and ends on G9.

5. Pattern



Musical notation for the fifth pattern of the C major scale. The treble clef is on a single staff. The key signature has one sharp (F#). The time signature is 4/4. The notation shows the scale ascending and then descending. The fingering is indicated by numbers 1-15 below the notes. The scale starts on C6 and ends on G10.